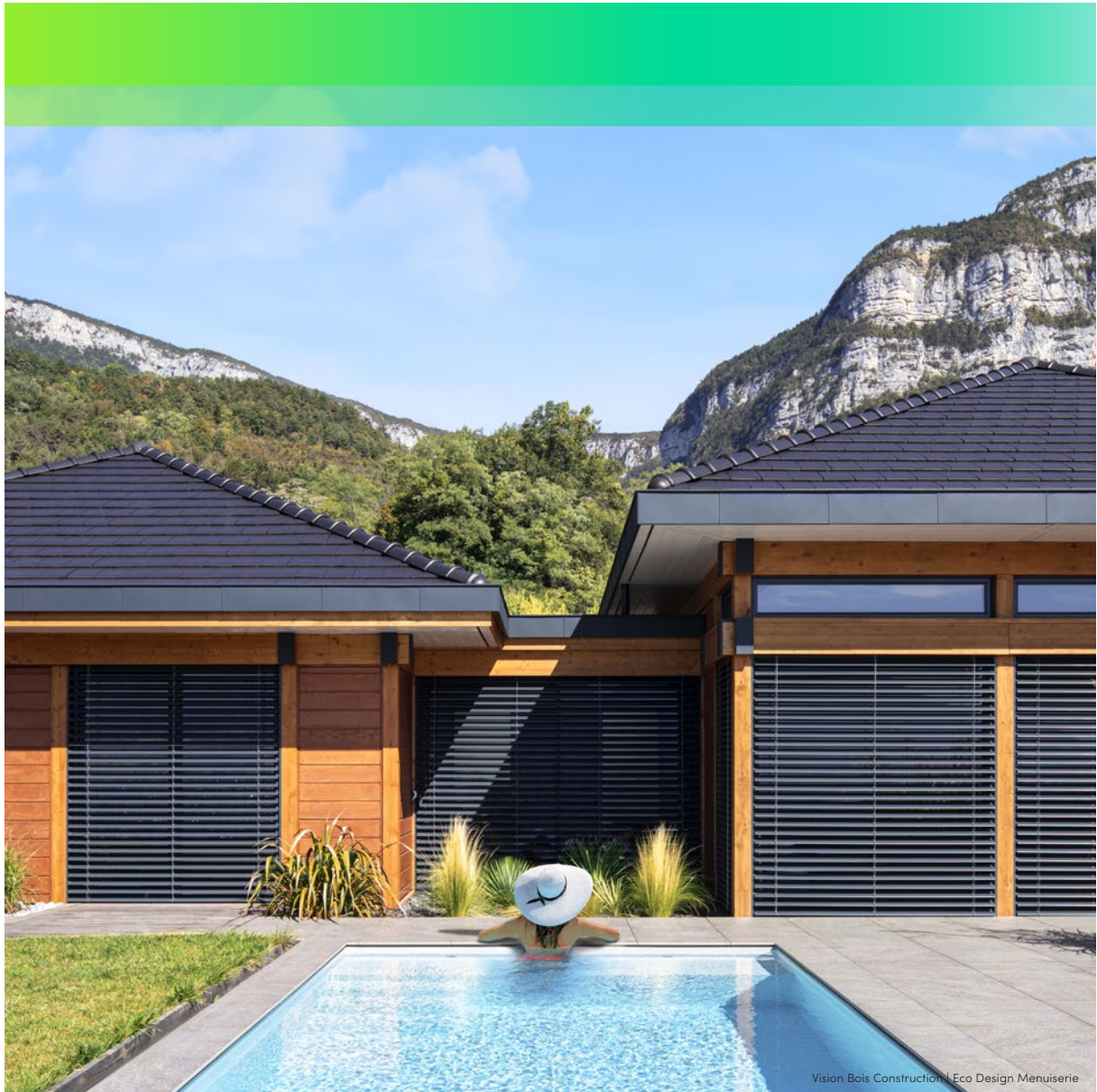


External Venetian Blinds

Natural light control.




 **GRIESSER**

Inspired by
the **Sun.**



We love the sun – it inspires us daily.
As pioneers in our field, we design
excellent solutions that will make life
more comfortable and last for years.

Our vocation: advancing new ideas for
tomorrow's world.

A photograph of a modern building's exterior. A large, leafy tree is on the left, casting shadows on a light-colored wall. A white, rectangular entrance structure is in the lower right, with a wooden deck in front of it. A stone path leads from the bottom right towards the entrance. The scene is brightly lit, with strong shadows from the tree and the building's overhang.

Stay in control as you make
optimal use of natural light.
No glare. No excessive heat.



Why choose **Griesser** **External Venetian** **Blinds?**



Tired of sitting in darkness whilst the sun is shining outside?

With Griesser blinds, you can enjoy sunlight without the glare, and keep the heat out at the same time. Adjusting the slat angle lets you regulate the amount of natural light entering the room.

Bring comfort and positive energy into your life.

Griesser has the widest range of external Venetian blinds. They are extremely strong and also complement a huge variety of architectural styles.

See everything that is going on outdoors and enjoy privacy from curious onlookers whilst you are indoors.

A very environmentally-friendly solution, external Venetian blinds have a positive carbon footprint, helping you to reduce yours.

By regulating the heat entering your home, you can significantly lower your energy consumption. With an automated solar shading system fitted, the savings off your energy bills can be up to 20%.

Never compromise. Our two-tone slats let you choose one colour for the inside and a different colour for the outside.



Optimal control of natural light.

Are you looking for maximum natural sunlight without being exposed to heat, glare and prying eyes? Then, external Venetian blinds offer the perfect solution.

All of our external Venetian blinds come with the option of a downward opening angle, meaning that a room will never be plunged into total darkness as the blind is closing.

Did you know?

When exposed to natural light, children learn up to 25% faster, productivity increases by 18% and sales rise by up to 40%.



Keep the heat outside in summer. Let the heat in during winter.

In summer, when it's hot outside, sun control will shield your indoor area from warming sunrays. This then does away with the need to install air conditioning and could decrease the energy used to cool your home by up to 50%.

In winter, you can reduce your heating costs thanks to the sun's energy entering your rooms.



Outward looking.

With slats, you have a clear view of the outside, which offers a real sense of well-being. This outward-looking perspective increases memory capacity by up to 15%, boosts healing processes, and leads to shorter telephone call handling times.



Sleek design.

Griesser offers a full array of alternatives to satisfy every requirement, whilst maintaining a sleek style.



Wind resistance.

All Griesser external Venetian blinds have proven wind resistance. Some can even withstand strong gusts of up to 92km/h and stronger.

A modern interior space featuring large windows with horizontal slats. The slats are made of a material with a unique, textured design, possibly wood or metal, and are available in two colors: a dark, charcoal grey and a lighter, natural wood tone. The slats are arranged in a way that allows natural light to filter through, creating a warm and inviting atmosphere. In the foreground, a dark, cylindrical wood-burning stove stands on the left. A light-colored sofa with a dark, textured throw pillow is positioned in the middle ground. A dining table with white chairs is visible in the background. A large, white, spherical pendant light hangs from the ceiling. A cup of coffee sits on a low table in the foreground, with steam rising from it. The overall design is minimalist and contemporary, with a focus on natural materials and light.

Slats with a unique design for
any architectural style,
also available in two colours for
a perfect harmony.



Metalunic®

The company's flagship product, Metalunic® is the external Venetian blind that best combines solar shading, security and attractive design.

The slats are adjusted internally in the guide profile, so you have full control over their orientation.



Metalunic® advantage: the all-metal external Venetian blind is the best in its class. Its fully hidden mechanism offers unobstructed views of the world outside.



Metalunic®

- Very attractive design with no visible cables. Unhindered views of the outdoors.
- Intelligent motor: silent, soft closing system, a nice change of light.
- Auto-stop system if an obstacle is present
- Fitted with anti-intrusion system: features include anti-lift and blocked slats that cannot be removed from the outside.
- Very easy to clean.
- Quite simply the best in its class.



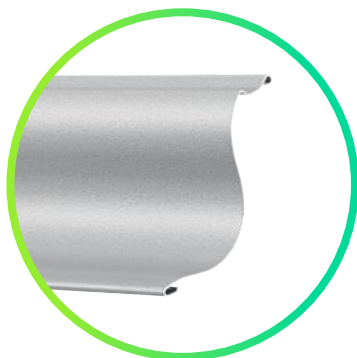
Daylight control



Darkening



Wind resistance



Sinus Slats

- Let in an additional 50% natural light and reduce glare by 25%, thanks to the shape of these slats which reflect sunrays towards the ceiling.
- Unique curved slat shape lends the facade an aesthetic design. S-shaped for an even stronger design.
- The best product in its class just got better.







Grinotex®

Grinotex is a high-performance adjustable solar shade that provides optimum light regulation, and can effectively block the light entering your rooms.

Cubic design, precise stacking when closing, strength ... this precision engineering is worthy of a Swiss watchmaker!



Grinotex advantage: an encased stainless-steel cable is used rather than textile, for incredible strength and guaranteed durability and is suitable for large widths.



Daylight control



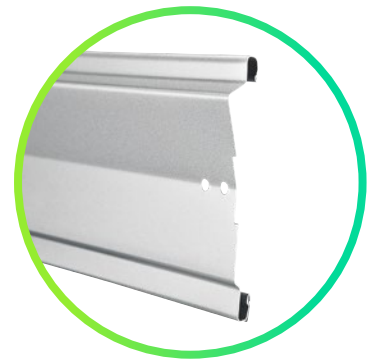
Darkening



Wind resistance

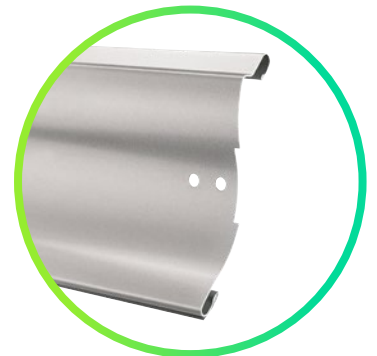
Grinotex®

- Fitted with anti-intrusion system: features include anti-lift and blocked slats that cannot be removed from the outside. Auto-stop system if an obstacle is present.
- Can be closed fully thanks to a sealing lip.
- Intelligent motor: silent, soft closing system, a nice change of light.



Sinus Slats

- As well as looking great, S-shaped slats offer many additional advantages. The slat's curved shape directs sunrays towards the ceiling. The room then exudes a lovely atmosphere.



Lamisol®

Lamisol® is our best-selling external Venetian blind. Strength, bold lines, optimum regulation of natural light, and silent closing are its key features.



Lamisol advantage: Z-shaped slats make this the perfect product for office buildings; but thanks to its good darkening, it is also suitable for all your living areas.



Lamisol®

- A sophisticated look supported by the alignment of ladder webbing cords and tex-band.
- A sealing lip for quieter closure.
- Two different slat width options available.



Daylight control



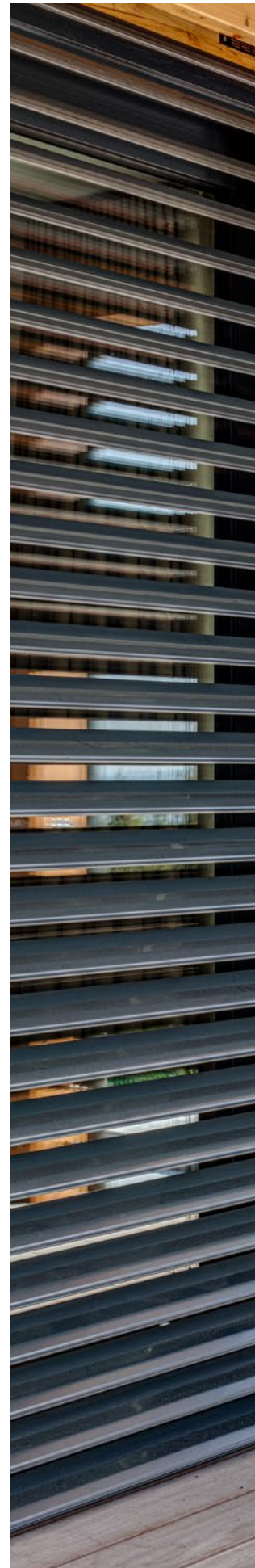
Darkening



Wind resistance

Lamisol® Options

- In order to guarantee glare protection and simultaneous light transmission during the downward movement, the venetian blinds can optionally be ordered with a working position of 45 degrees. This prevents sudden darkening.
- Different slat angles on one blind: a lower part protects against glare, a middle part provides pleasant natural lighting, and an upper part reflects the maximum amount of sunlight into the room.
- Also comes in a front-mounted option that is easy to install in renovation projects.
- Specially manufactured to resist strong winds of up to 92km/h.







Solomatic®

Solomatic® is Griesser 's classic external Venetian blind featuring an original design that is still just as contemporary-looking today.

Continuously adapted to incorporate the latest technologies, Solomatic is still very popular, especially in the northern hemisphere.



Solomatic advantage: Griesser 's classic external Venetian blind.



Daylight control



Darkening



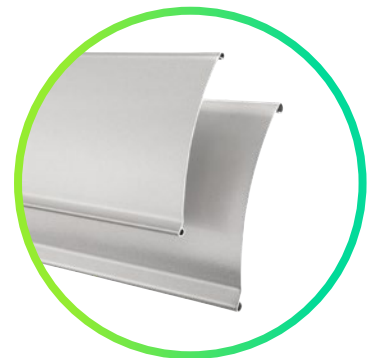
Wind resistance

Solomatic®

- Convex slats with lip.
- Two slat widths available.
- Good wind resistance.

Solomatic® Options

- In order to guarantee glare protection and simultaneous light transmission during the downward movement, the venetian blinds can optionally be ordered with a working position of 45 degrees. This prevents sudden darkening.
- Also comes in a front-mounted option that is easy to install in renovation projects.



Aluflex®

Aluflex®, the latest addition to the range, has been designed with the flattest, thinnest blades in the range. Being very flexible, and lightweight, it is the first choice of architects working in tight spaces.



Aluflex advantage: super flat, lightweight, retro style and featuring the most flexible slats in the range. Adapted for renovation.



Aluflex®

- Retro design.
- Super flat for the best views looking out.
- Super flexible for enhanced impact resistance.
- Requires little room to mount.

Aluflex® Options

- Different widths can accommodate the space you have available.



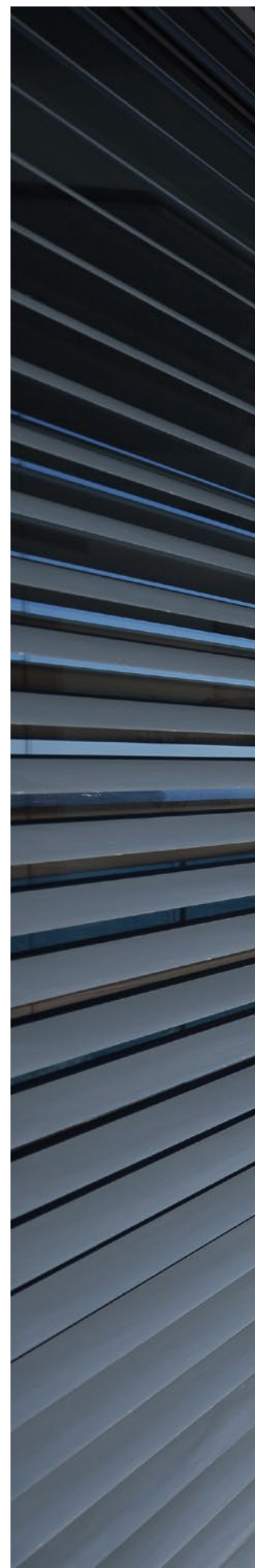
Daylight control



Darkening



Wind resistance





Explore the **world of** **Griesser colours.**



Huge selection of colours available.

Over 150 standard colours are available to help you find the perfect match for a facade.

If your chosen colour is not included in our standard selection, our lacquer unit will be happy to find the right solution based on your requirements.

Griesser is always ready to expand its catalogue as new trends evolve.

No more need to compromise with BiColor.

Enjoy a unique home interior by choosing a different colour on the outside! Create a relaxing atmosphere every day by selecting lavender blue or Nile green. Add more style by choosing lemon yellow or mandarin orange for very vibrant days!

Try something different. Dare to be colourful!



BiColor



All devices
compatible with
your **Smart Home.**

Control Solutions from Griesser.

Whilst you are busy completing everyday tasks, or if you are away from home, Griesser control solutions can autonomously manage energy efficiency, indoor comfort and the protection of your blinds.

Adjusting the brightness, managing the interior temperature by regulating the amount of natural light coming in, and providing security in windy conditions ... Making energy savings is effortless and you'll benefit from maximum comfort for many years to come.

Connectivity.

Griesser has an in-house development team devoted to control systems that is working on new approaches and partnerships which will enable external Venetian blinds to be controlled using the widest possible range of technologies.

Sustainability at Griesser.

Griesser is now one of Europe's leading suppliers of high-quality solar shading products. Founded in 1882, this eco-friendly and innovative company has always stayed true to its values.

Over the past 20 years, several key steps have been undertaken at the external Venetian blind production site in Aadorf, Switzerland.

An investment of 5 million was made into research and a new aluminum slat coating system that is based on atmospheric plasma technology. A world-first in the Coil Coating industry, this process eliminates the need for any chemicals during the cleaning phase and also allows paints with a very low water content to be used. Thanks to this investment, Griesser can produce four times faster, help protect the environment more and shorten the cleaning line by a factor of 20.



Company headquarters have been renovated, incorporating a special overnight cooling and air conditioning system, together with the installation of Aluflex on the eastern facade – the lightest external Venetian blinds.



Griesser's membership of EnAW, a Swiss association that promotes energy efficiency in industry, has encouraged additional steps: replacing the factory lighting with LEDs and reducing the production line warmup will save 180 MW/h per year in energy consumption.



2020 saw construction begin on a new powder coating plant in Aadorf that will feature photovoltaic panels on its roof. The energy harnessed by these panels will be used to autonomously power the entire Griesser site and will also be transferred to nearby private homes at weekends. A residual heat recovery system will be installed for use on the production floor.



For the last 15 years, Griesser has partnered with myClimate to fund projects with a strong ecological, economic and social impact; and has been driven by energy conservation, as evidenced by the many measures undertaken so far and those that are planned for the future.



Recently, Griesser has adopted a more concrete philosophy, underscoring its commitment to environmental protection and sustainable development. The company has set targets for reducing its carbon footprint whilst outlining a sustainable model for the next three decades, including a fleet of emissions-free vehicles by 2030 and production sites that will become climate-neutral by 2035.

Griesser

Your partner for
living comfort
solutions.



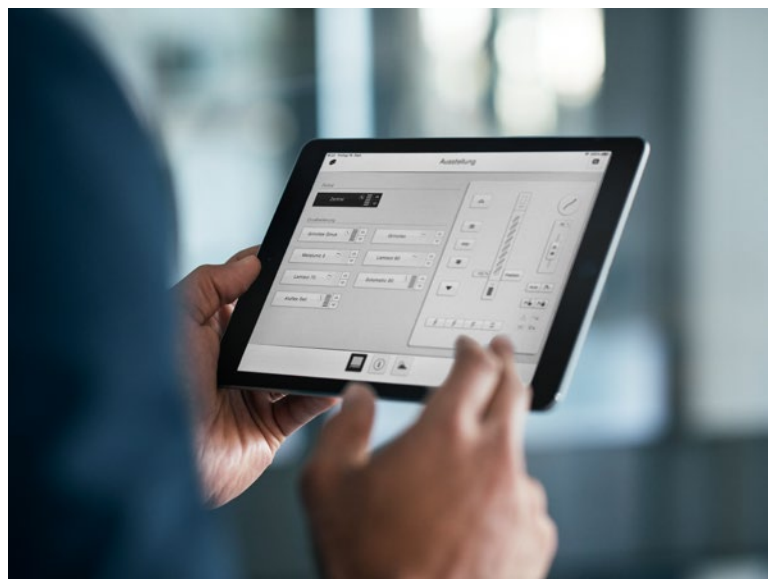
Rolling shutters.

Rolpac®, Alucolor®, Tradi PUR,
Renobloc, Minicolor®.



Awnings.

Solozip®, Soloscreen®,
Soloroll®.



Controls.

Compatible Smart Home & Smart Building.



Window Shutters.

Wing Shutters & Sliding Shutters.



Griesser offers an endless variety of solar protection. Its strong, visually-appealing products provide comfortable indoor temperatures, boast a sleek design and blend in harmoniously with any architectural style.

They can be discreet or totally invisible, as you require. Being true elements of decorative distinction, they underscore the unique aesthetic appeal of the facade.

Quality solutions designed around you.



External Venetian Blinds.

Metalunic®, Grinotex®, Lamisol®, Solomatic®, Aluflex®.

































Inspired by
the **Sun.**



Discover our external venetian
blinds in a wink.

External Venetian Blinds

		Max. Dim.		
+	Metalunic® The all-metal external Venetian blind is the best in its class. Its fully hidden mechanism offers unobstructed views of the world outside.	 8 m ²  2800 mm  4000 mm	 Daylight control  Darkening  Wind resistance	<ul style="list-style-type: none"> • Maximum light with no glare. • Offering the highest safety levels.
+	Grinotex® An encased stainless-steel cable is used rather than textile, for incredible strength and guaranteed durability and is suitable for large widths.	 8 m ²  4000 mm  4250 mm	 Daylight control  Darkening  Wind resistance	<ul style="list-style-type: none"> • Excellent light with minimum glare. • Offering increased safety levels. • Available in larger sizes than Metalunic.
+	Lamisol® Z-shaped slats make this the perfect product for office buildings; but thanks to its good darkening, it is also suitable for all your living areas.	 10 m ²  4500 mm  4300 mm	 Daylight control  Darkening  Wind resistance	<ul style="list-style-type: none"> • Ideal for large office buildings and living areas. • Clear traits.
+	Solomatic® Griesser's classic external Venetian blind.	 15 m ²  4500 mm  4500 mm	 Daylight control  Darkening  Wind resistance	<ul style="list-style-type: none"> • Neutral, straight forward, design.
+	Aluflex® Super flat, lightweight, retro style and featuring the most flexible slats in the range. Adapted for renovation.	 20 m ²  5000 mm  4500 mm	 Daylight control  Darkening  Wind resistance	<ul style="list-style-type: none"> • If motorized requires less energy as the lightest. • Available in larger sizes. • Ideal for space limited construction situations.

For more technical information,
scan the QR Code



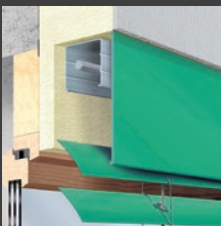
Type of laying



Niche System

- Recess design allows the product to be completely hidden.
- Can be built into the external insulation.
- Very attractive finish requiring no additional coating.

- ✓ Metalunic
- ✓ Grinotex
- ✓ Lamisol
- ✓ Solomatic
- ✓ Aluflex



Front-mounted system with cover

- Concealed mechanism.
- Easy access for maintenance.
- Ideal solution where space is limited.
- Customised product.

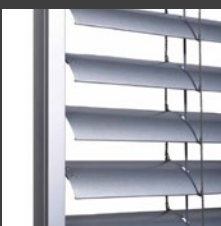
- ✓ Metalunic
- ✓ Grinotex
- ✓ Lamisol
- ✓ Solomatic
- ✓ Aluflex



Installation system with box

- Attractive finish.
- Decorative element for the facade.
- Depending on the specification, can have no gap between the sliding mechanism and the woodwork.

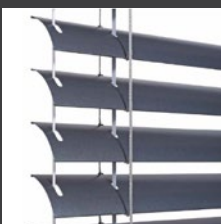
- ✓ Lamisol
- ✓ Solomatic
- ✓ Aluflex



Slide guide

- Enhanced rigidity and fit.
- Built-in guide rails for a more aesthetic design.

- ✓ Metalunic
- ✓ Grinotex
- ✓ Lamisol
- ✓ Solomatic
- ✓ Aluflex



Cable guide

- Subtle.
- Attractive.

- ✓ Solomatic
- ✓ Aluflex

Inspired by the **Sun.**

griessergroup.com

